

# Poppy 2

## LINETYPES

—————	SUBDIVISION BOUNDARY
—————	NEW LOT OR PARCEL LINE
—————	NEW BUILDING ENVELOPE
—————	NEW EASEMENT
—————	EXISTING LOT LINE
—————	EXISTING RIGHT OF WAY
—————	EXISTING EASEMENT
—————	EXISTING CENTERLINE

## LOT/PARCEL

DOTTED TEXT  
VOLUME 23 CITIES AND TOWNS PAGE 14

## ABBREVIATIONS

AC	ACRES	PG	PAGE
B.E.	BUILDING ENVELOPE	PM	PARCEL MAP
C&T	CITIES AND TOWNS	PUE	PUBLIC UTILITY EASEMENT
DOC	DOCUMENT	R	RADIUS
(E)	EXISTING	SS	SANITARY SEWER
L	LENGTH	SUR	SURVEYS
NO.	NUMBER	VOL	VOLUME
O.R.	OFFICIAL RECORDS		

## SYMBOLS

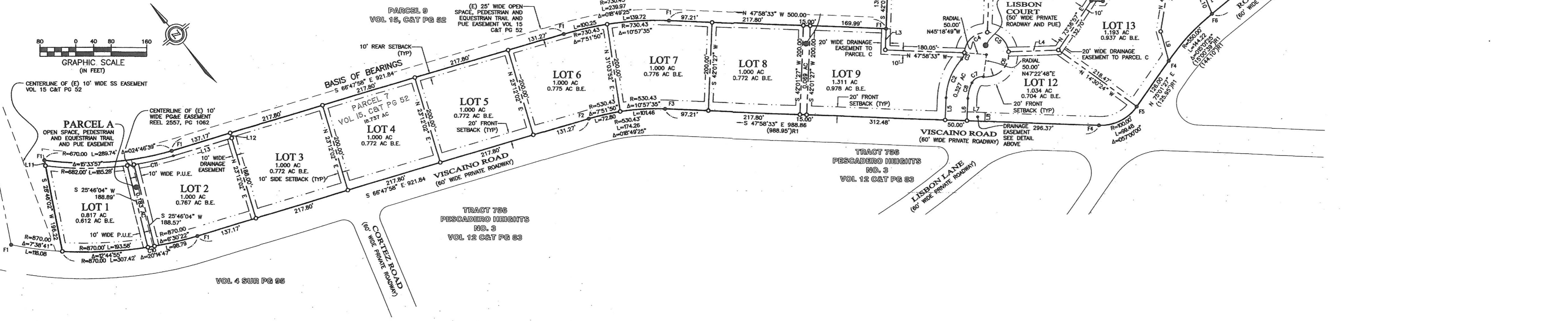
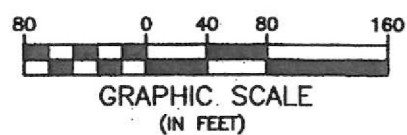
- F1= FOUND 3/4" IRON PIPE, RCE 15310 PER VOL.15 C&T PG.52
- F2= FOUND 2"x2" HUB, LS 2257, SHOWN AS LS 2975 PER VOL.15 C&T PG.52
- F3= FOUND REBAR, NO CAP, SHOWN AS 2"x2" W/ BRASS PIN PER VOL.15 C&T PG.52
- F4= FOUND 2"x2" PER VOL.15 C&T PG.52
- F5= FOUND 2"x2", RCE 15310, SHOWN AS 2"x2" PER VOL.15 C&T PG.52
- F6= FOUND REBAR, LS 2369 PER VOL.15 C&T PG.52
- POINT USED FOR CALCULATION ONLY
- SET 1" IRON PIPE, PLS 8368 (UNLESS NOTED OTHERWISE)
- (R1) VOLUME 15, CITIES & TOWNS, PAGE 52

## NOTES

- DISTANCES SHOWN ARE IN FEET AND DECIMA THEREOF.
- BEARINGS AND DISTANCES SHOWN ARE BOTH AND MEASURED UNLESS NOTED OTHERWISE.

## BASIS OF BEARINGS

THE BEARING OF S 66°47'58" E AS SHOWN ON MAP OF TRACT NO. 1003, POPPY HILLS GOLF ( SUBDIVISION, FILED IN VOLUME 15, PAGE 52, C & TOWNS, AS FOUND MONUMENTED AND SHOWN HEREON IS THE BASIS OF BEARINGS FOR THIS



VOL 4 SUR PG 95

PARCEL E  
OPEN SPACE, PEDESTRIAN AND EQUESTRIAN TRAIL AND PUE EASEMENT

TRACT 463  
PESCADERO HEIGHTS  
SUBDIVISION NO 4  
VOL 8 C&T PG 21

TRACT 756  
PESCADERO HEIGHTS  
NO. 3  
VOL 12 C&T PG 83

TRACT 756  
PESCADERO HEIGHTS  
NO. 3  
VOL 12 C&T PG 83